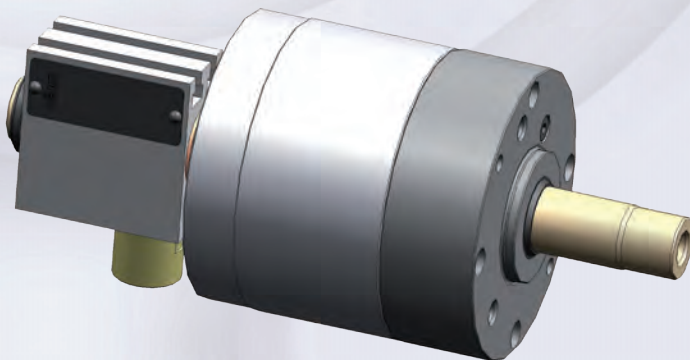
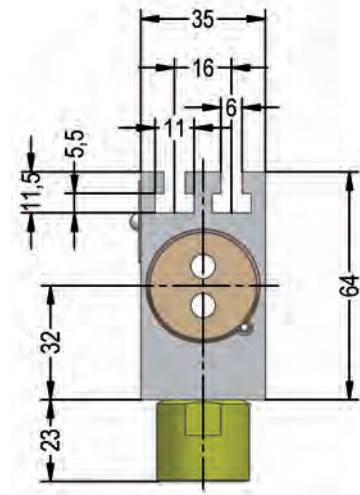
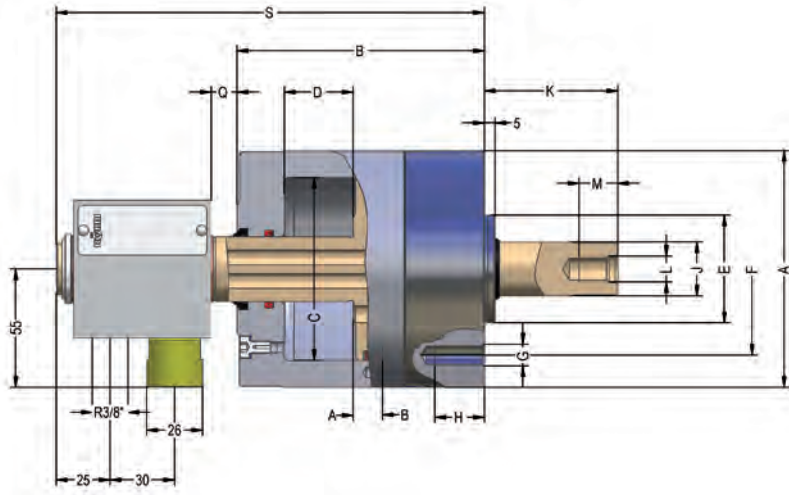


**Technical features:**

- Up to 10 bar
- Air operated cylinder up to max. 10 bar, 2 bar
- In case of a sudden decrease of pressure with cylinders LVS safety devices guarantee that the clamping pressure in the piston area will be maintained
- Stroke control by means of a single touch limit switch, inductive stroke monitoring, F 90 stroke monitoring system, attachment on the machine side
- The cylinders can also be actuated when rotating
- The max. admissible speed can be run continuously (100 % ED).
- On request: with central media feed-through



## LVS up to 10 bar



Tool group C 15  
Type 555-60 LVS  
Air-operated cylinders without through-hole with safety device and stroke control

Item no.	096553 ●	096554 ●	096555 ●	096556 ●	096557 ●	096558 ●	096559 ●	096560 ●
Size	85	105	130	150	200	250	300	350
A	110	130	155	180	240	287	337	387
B	115	115	117	128	125	125	125	148
C	85	105	130	150	200	250	300	350
D stroke	32	32	32	32	32	32	32	45
$F_{ns}$	50	50	80	95	95	125	125	125
F	80	80	105	145	145	170	170	170
G	3 x M 10	3 x M 10	3 x M 12	4 x M 16	4 x M 16	6 x M 16	6 x M 16	6 x M 16
H	23	23	27	35	35	35	35	35
J	25	25	25	25	35	35	35	35
K max.	62	88	79	74	87	87	82	82
K min.	30	56	47	42	55	55	50	37
L	M 12	M 12	M 16	M 16	M 24	M 24	M 24	M 24
M	18	18	24	24	36	36	36	36
Q max.	44	44	44	44	44	44	44	57
Q min.	12	12	12	12	12	12	12	12
S max.	231	231	233	244	241	241	241	277
S min.	199	199	201	212	209	209	209	232
Piston area <b>A</b> cm <sup>2</sup>	49,7	79,5	125,7	169,6	307,1	483,8	699,8	955
Piston area <b>B</b> cm <sup>2</sup>	51,8	81,7	127,8	171,8	304,5	481,5	697,2	952,5
Eff. draw bar pull (F=6 bar) kN	3	4,80	7,50	10	18	28,50	41,50	56,50
Max. admissible speed min <sup>-1</sup>	5000	5000	5000	5000	4500	4000	3200	3200
Air consumption for full double stroke at 6 bar NL	2,8	4,6	6,5	7,5	12,5	18	26	50
Moment of inertia J kgm <sup>2</sup>	0,007	0,009	0,03	0,06	0,09	0,10	0,237	0,45
Weight approx. kg	5,3	6,5	9	12,5	19,5	23	28,5	32,5